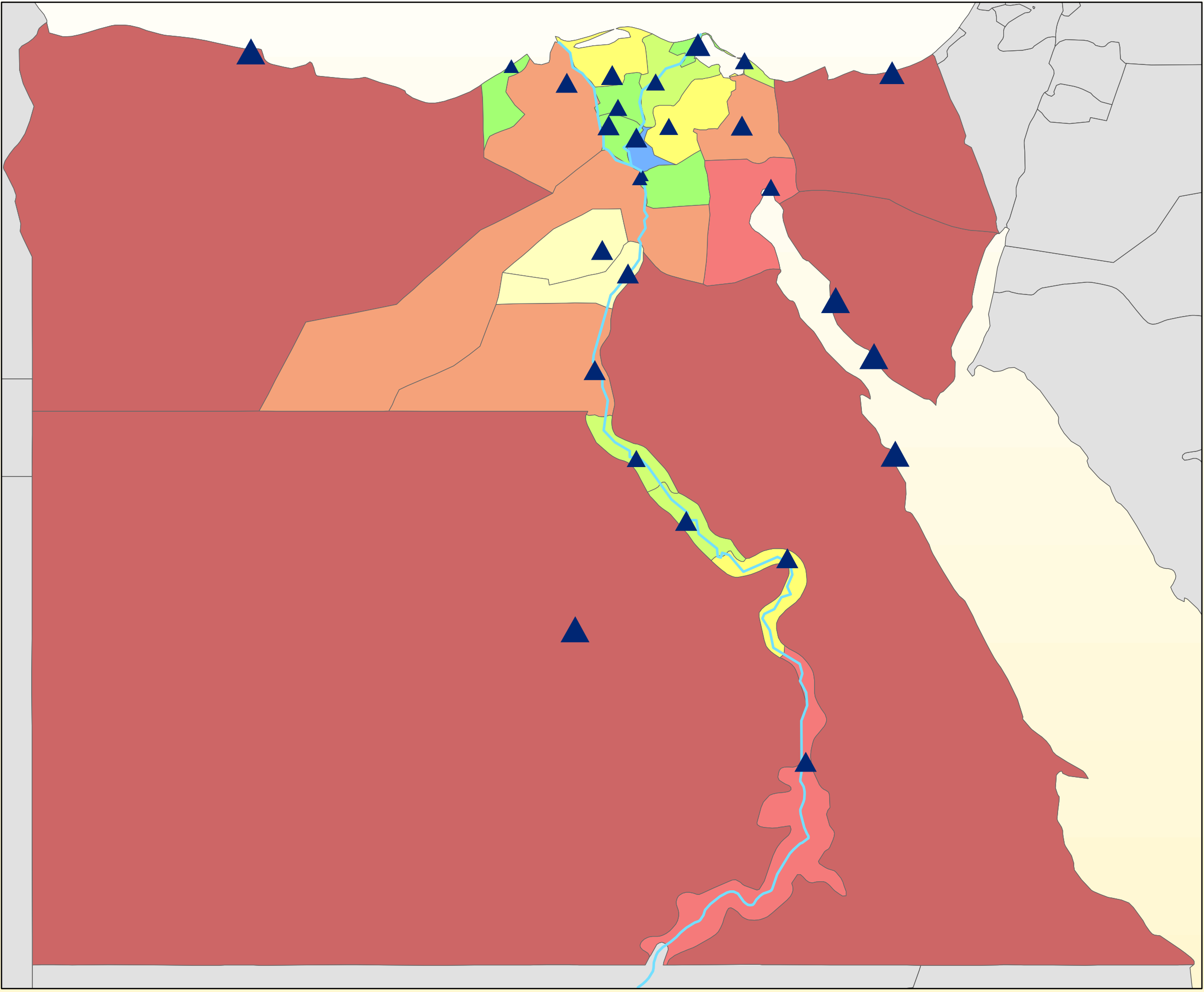


Precipitation in Provinces of Egypt and the Correlation with Population Density

Population Density by Square Mile

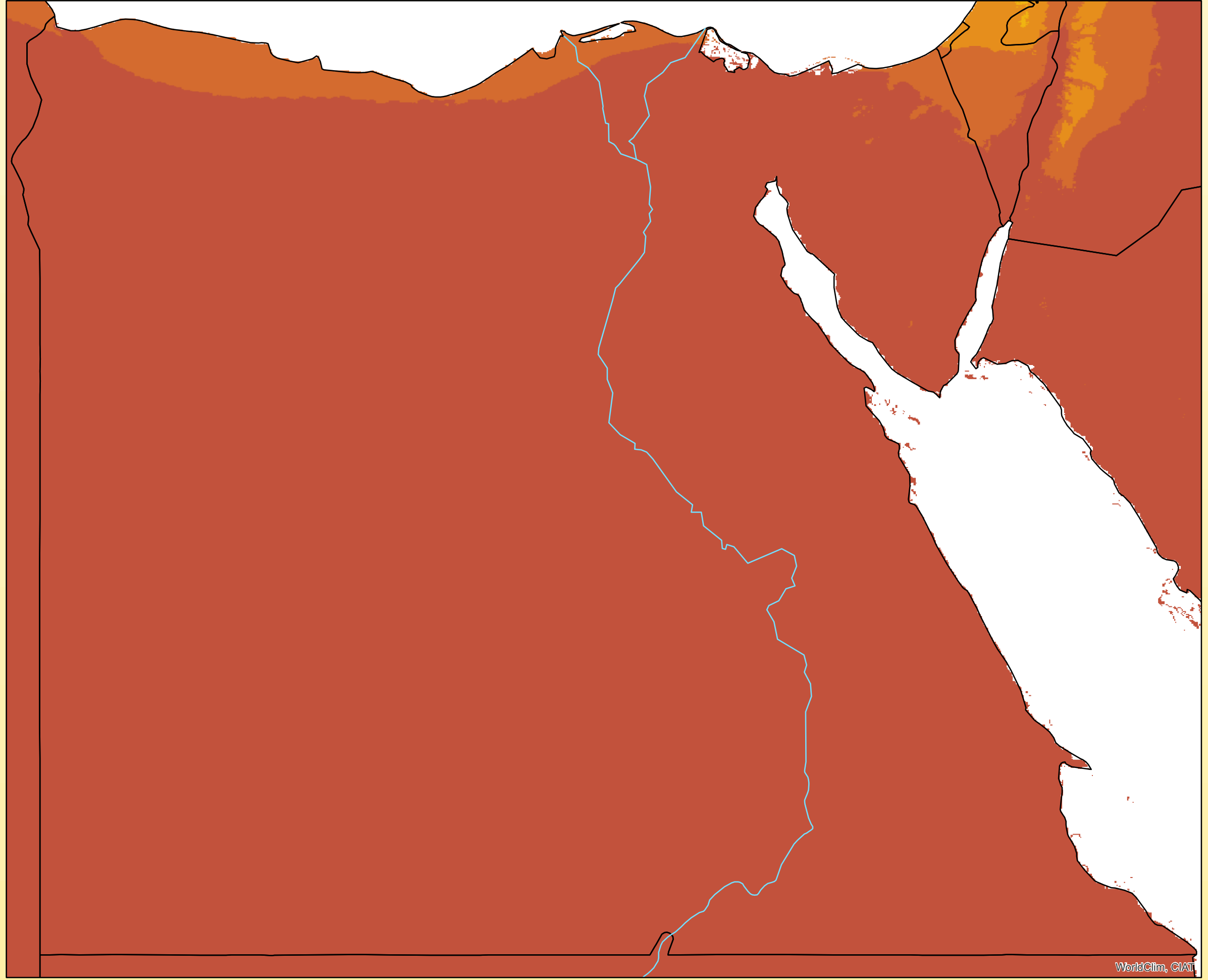


Legend

POP_ADMIN / SQMI POP_RANK

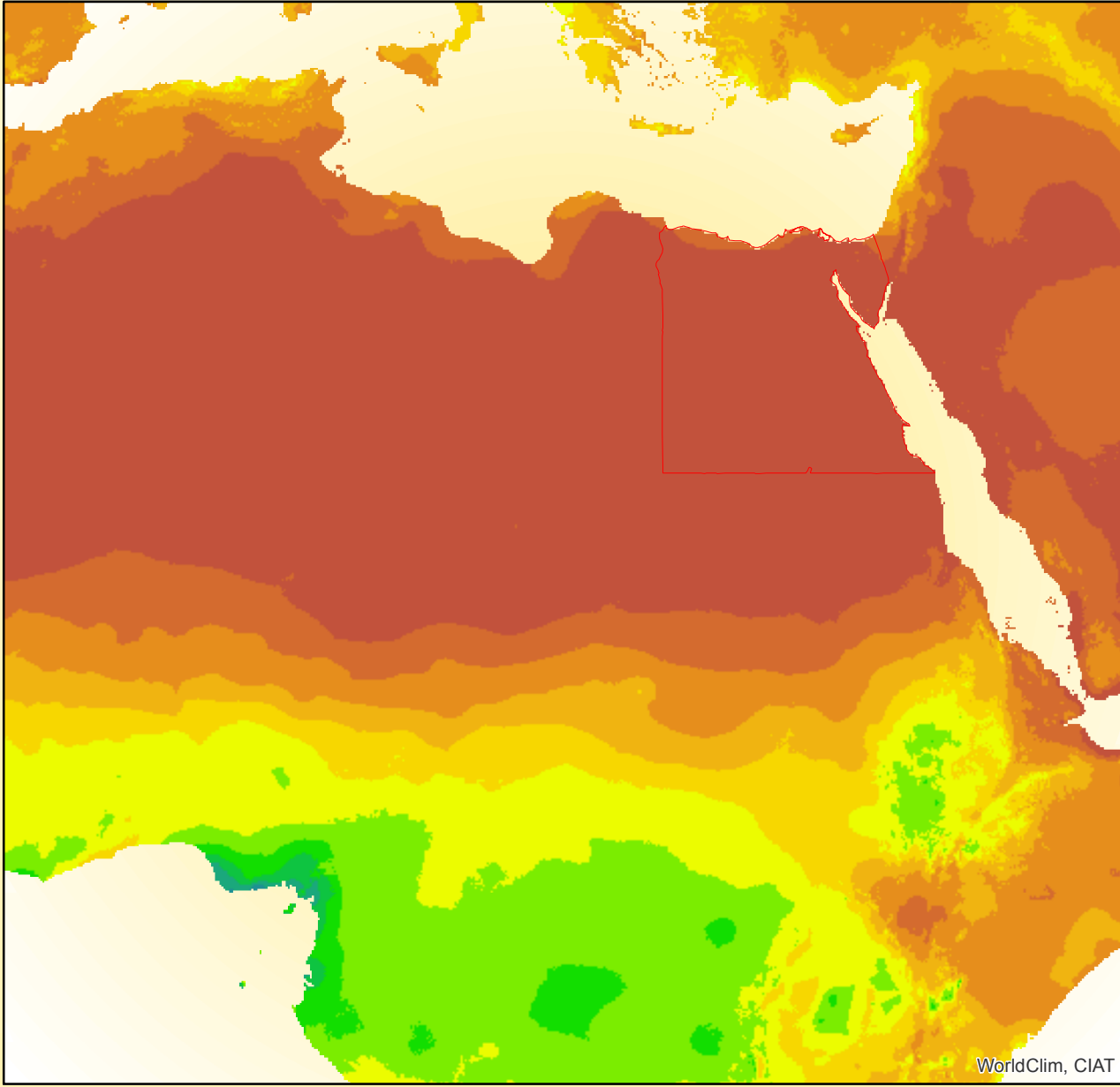
0.7827 - 19.31	▲	1
19.32 - 160.6	▲	2
160.7 - 468.3	▲	3 - 4
468.4 - 948.4	▲	5
948.5 - 2140	▲	6
2141 - 2992	▲	7
2993 - 5860		
5861 - 7872		

Total Annual Precipitation

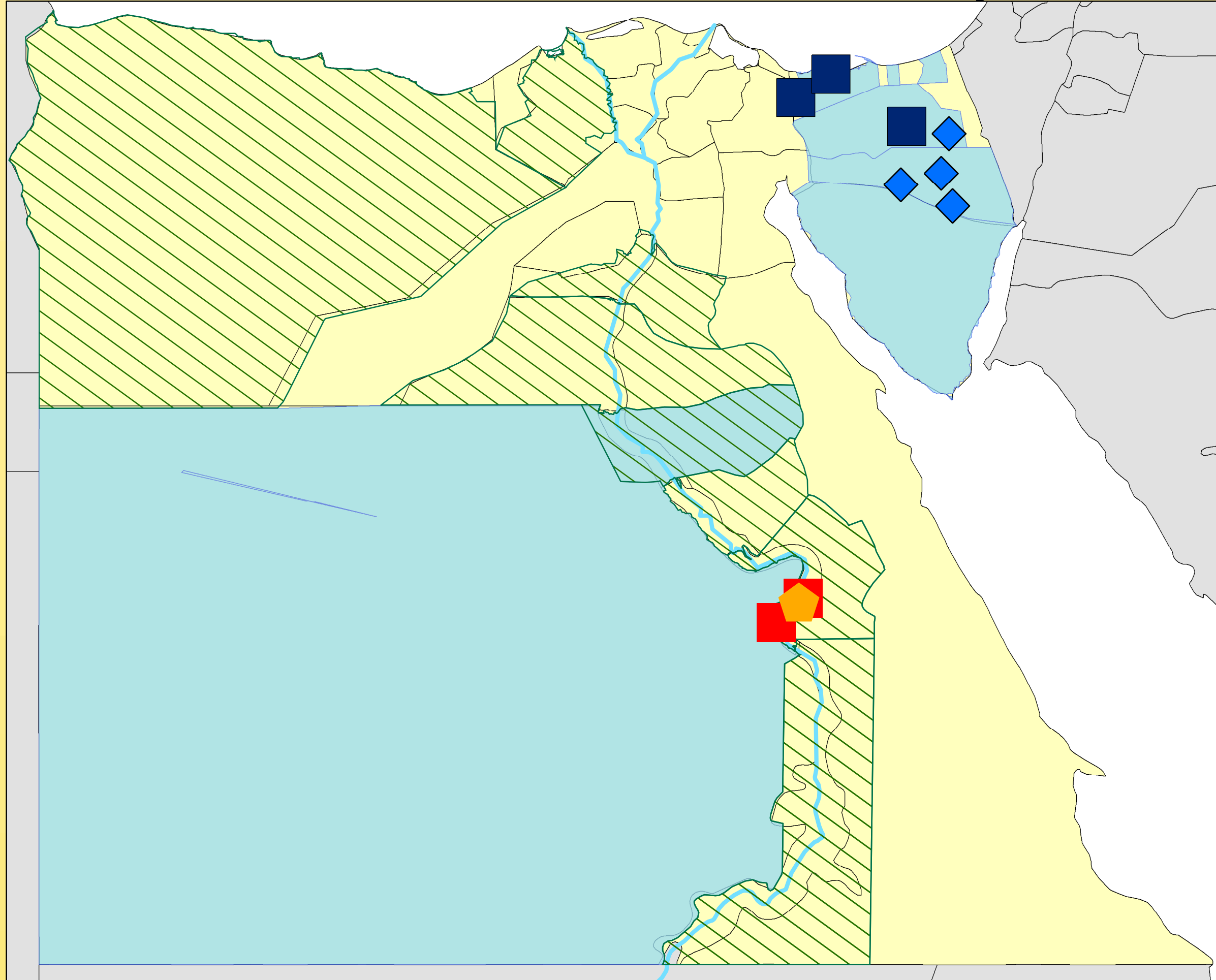


Legend

—	rivers
■	0 - 100
■	101 - 250
■	251 - 500
■	501 - 750
■	751 - 1,000
■	1,001 - 1,500
■	1,501 - 2,000
■	2,001 - 2,500
■	2,501 - 3,000
■	3,001 - 3,500
■	3,501 - 4,000
■	4,001 - 5,000
■	5,001 - 11,401



Essential Resource Security



Legend

■	Packhouses
■	Cold Storage Facility
■	Food Redistributin Area
■	Water Redistribution Area
■	Water Wells
■	Water Reservoirs

Conclusion: Data shows that the amount of precipitation the provinces recieve does not chage the population density.The population resides around permanent and reliable sources of water and food such as the Nile, the Red Sea, and the Mediteranean Sea.